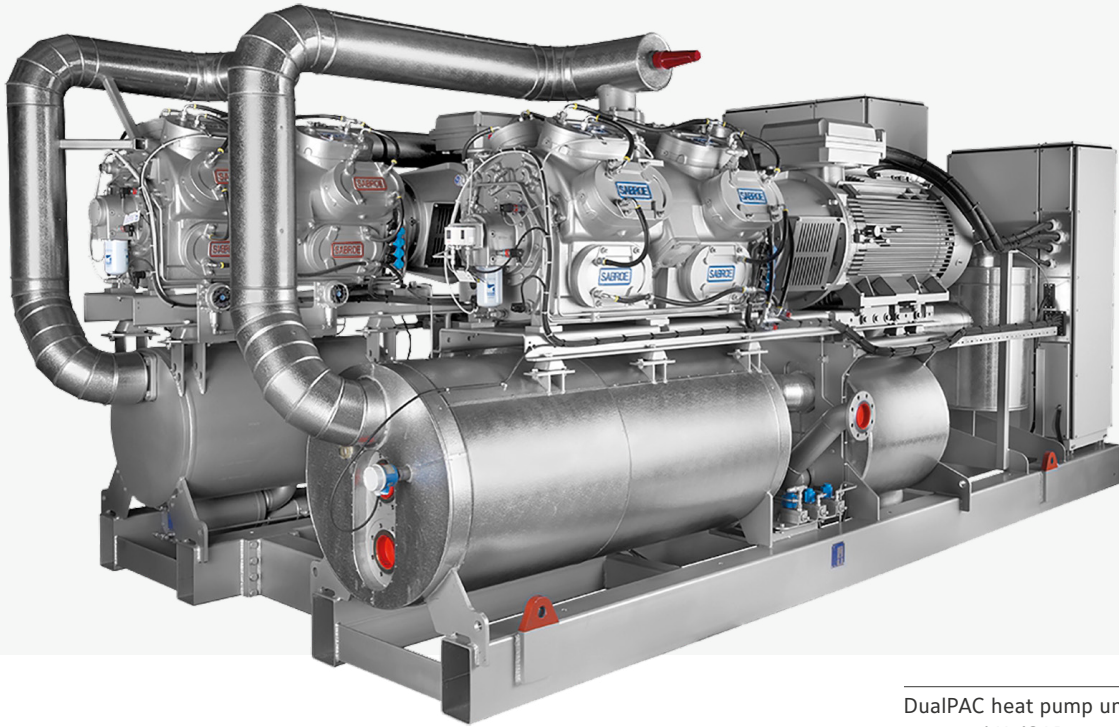




SabroeHeat



DualPAC heat pump unit with panel-mounted UniSAB systems controllers

## Sabroe DualPAC heat pumps

Two-stage ammonia-based heat pumps with capacities of up to 3,000 kW

Sabroe DualPAC heat pumps combine ChillPAC and HeatPAC units into one single heat pump, using an ingenious modular system that makes it possible to achieve high temperature lifts, with the advantages of compact design and attractive operating economics. The DualPAC configuration is optimised for use in district heating and ground-source cooling.

The DualPAC is a two-stage high-temperature heat pump configuration that uses ammonia as refrigerant. It is designed with the aim of providing the best possible performance and versatile operating conditions. This unique setup ensures maximum flexibility in both configuration and capabilities, because all standard ChillPAC and HeatPAC models can be used.

DualPAC is an exceptional heat pump for utilising low source temperatures and supplying high temperatures at high capacity. The unique heat exchangers and vessels ensure minimum refrigerant charge as well as the highest possible efficiency.

### Range

There are seventeen different models in the range of DualPAC heat pumps, with capacities ranging from 400 kW to 3,000 kW.

Features	Benefits
Stepless, skip-free capacity control ensures that output always matches requirements	Lowest possible operating costs and maximum return on investment
Consistently high performance at both full and part load	Maximum part-load efficiency and low life cycle costs
Unique two-stage solution featuring patented purpose-designed open inter-stage cooler	Ultra-low refrigerant charge and small footprint
Space-saving footprint, with fewer moving parts and very low vibration	Exceptional reliability and low maintenance costs
Service and maintenance based on load-based service schedules	Improved reliability, longer service intervals, minimal downtime, low cost of ownership

The power behind **your mission**





Condenser: water inlet: 50 °C, outlet 70 °C | Evaporator: water inlet 30 °C, outlet 20 °C

Type	Heating capacity	Cooling capacity	Power consumption (shaft)	R717 charge	Dry weight	Unit dimensions in mm			Sound pressure level	COP shaft heating
	kW	kW	kW	kg	kg	L	W	H	dB(A)	
DualPAC 24-W	434	345	90	53	5800	3500	3000	2000	82	4.8
DualPAC 26-W	652	519	134	60	6200	3700	3000	2000	83	4.9
DualPAC 28-W	869	692	178	71	6500	3750	3000	2000	84	4.9
DualPAC 104-W	1039	827	213	78	7500	5000	3000	2000	84	4.9
DualPAC 106-W	1557	1232	325	103	9200	5500	3000	2000	85	4.8
DualPAC 108-W	2075	1625	450	119	12500	6000	3000	2200	86	4.6
DualPAC 112-W	2895	2266	628	132	16000	7500	3000	2200	86	4.6
DualPAC 704-W	498	395	102	53	7000	4200	3000	2100	86	4.9
DualPAC 706-W	747	594	153	64	8500	4500	3000	2100	86	4.9
DualPAC 708-W	996	789	206	78	10000	5000	3000	2100	87	4.8
DualPAC 712-W	1494	1180	312	106	13500	5500	3000	2100	88	4.8
DualPAC 716-W	1991	1559	433	118	16500	6100	3000	2100	89	4.6

Condenser: water inlet: 70 °C, outlet 90 °C | Evaporator: water inlet 15 °C, outlet 5 °C

Type	Heating capacity	Cooling capacity	Power consumption (shaft)	R717 charge	Dry weight	Unit dimensions in mm			Sound pressure level	COP shaft heating
	kW	kW	kW	kg	kg	L	W	H	dB(A)	
DualPAC 704-W	460	318	150	57	7000	4200	3000	2100	86	3.1
DualPAC 706-W	690	476	223	65	8500	4500	3000	2100	86	3.1
DualPAC 708-W	920	623	298	75	10000	5000	3000	2100	87	3.1
DualPAC 712-W	1381	940	445	102	13500	5500	3000	2100	88	3.1
DualPAC 716-W	1841	1243	608	114	16500	6100	3000	2100	89	3

Dimensions, weight and sound pressure levels are guidelines only.

## Options

- Variable-speed drive (VSD)
- Soft-starter or Y/D starter
- Desuperheater
- Subcooler
- Control panel mounted separately
- Shunt solution for high-temperature difference
- Customer-witnessed factory acceptance test (FAT)

W = Heat pump unit water/water

Please contact your Sabroe representative for availability.

Sound pressure levels measured in free field, over reflecting plane and one metre distance from the unit.

All information is subject to change without notice.

Johnson Controls Denmark ApS . Sabroe Factory . Christian X's Vej 201 . 8270 Højbjerg . Denmark . Phone +45 87 36 70 00  
[www.sabroe.com](http://www.sabroe.com)

PUBL-8593 01.2022

The power behind your mission



© 2022 Johnson Controls. All rights reserved.