



# Sabroe enclosure for ChillPAC and HeatPAC units

Add additional capacity to your existing cooling or heating system, without rebuilding your machine room.

The Sabroe enclosure is specifically developed for ChillPAC and HeatPAC units, and its design preserves the compact design that the two units are known for. The enclosure is equally suitable for outdoor installation and as sound enclosure in a machine room.

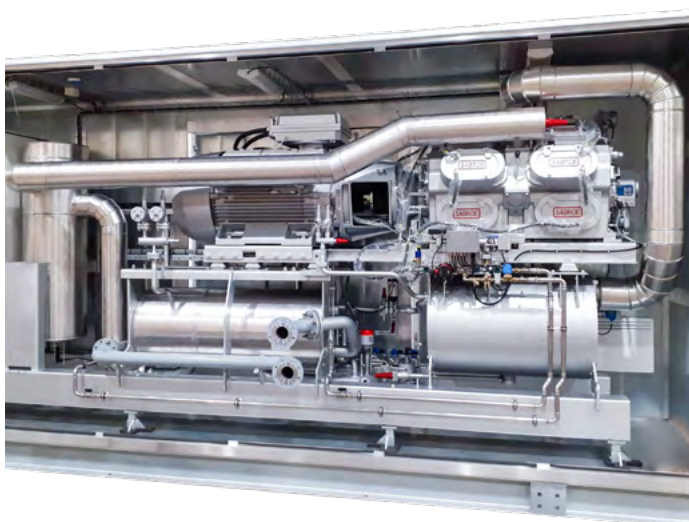
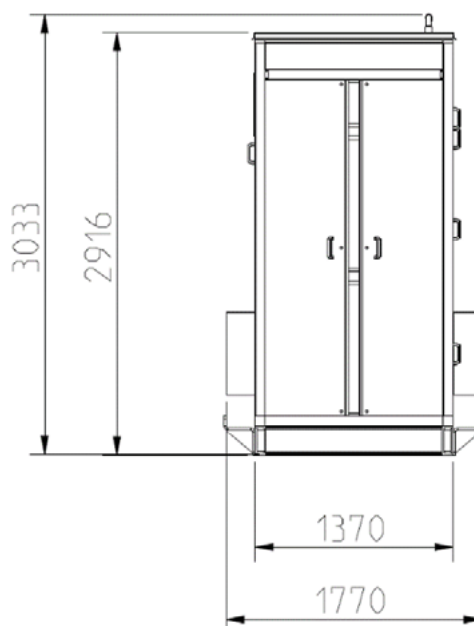
Outdoor installation of a ChillPAC or HeatPAC in the enclosure further provides great flexibility for remote cooling or heating - exactly where you need it.

## Features

- Frame made of aluminium profiles
- Outside plates of aluzinc (0.8 mm) for excellent corrosion resistance
- Perforated galvanized sheet plate inside
- Inside sheet plate is double-cross reinforced
- Roof is waterproofed with bitumen membrane
- 50 mm insulation in panels, 40 mm in doors and removable panels
- Adjustable feet for easy and stable mounting of the enclosure
- Easy service access through hinged doors and removable panels
- ATEX-certified ventilation
- Meets air flow requirements for emergency mechanical ventilation
- Meets air requirements of the ChillPAC/HeatPAC
- Temperature sensors
- Ceiling lights
- Heating panel
- Temperature control for heating and ventilation
- Gas detector
- Safety control with siren and signals
  - Pre-alarm: activation of alarm and mechanical ventilation
  - Main alarm: automatic stop of refrigerating system
- Compliance: PED and DS/EN 378 Location classification III.

For easy outdoor installation or as sound enclosure in a machine room.

Sound reduction: 17 dB(A) with tolerances of +/-3 dB.



Model	L	W	H	Weight
Low	4023 mm	1370/1770 mm*	2661/2778 mm*	1210 kg
	5011 mm			1360 kg
	6000 mm			1510 kg
	6988 mm			1760 kg
High	4023 mm	1370/1770 mm*	2916/3033 mm*	1250 kg
	5011 mm			1400 kg
	6000 mm			1550 kg
	6988 mm			1800 kg

Note:  
The enclosure is not defined as a machine room, because a person cannot stay inside it with the doors closed. Nevertheless, it fulfills machine room requirements for gas detection, ventilation and ATEX.

\* See the drawing above.

Ambient temperature: -15°C to +40°C.

Johnson Controls Denmark  
Sabroe Factory  
Christian X's Vej 201  
8270 Hojbjerg  
Denmark  
Phone +45 87 36 70 00  
www.sabroe.com

All information is subject to change without notice.

The power behind **your mission**

