



SabroeChill



Sabroe enclosure for outdoor installation

Sabroe enclosure for ChillPAC and HeatPAC units

Add additional capacity to your existing cooling or heating system, without rebuilding your machine room.

The Sabroe enclosure is specifically developed for ChillPAC and HeatPAC units, and its design preserves the compact design that the two units are known for. The enclosure is equally suitable for outdoor installation and as sound enclosure in a machine room.

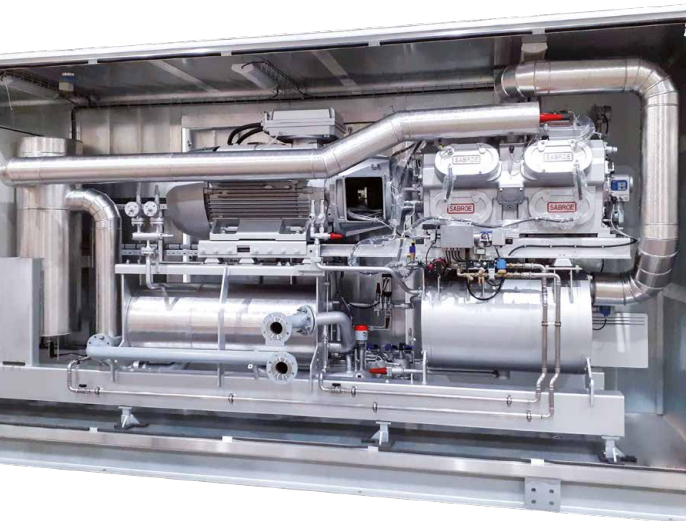
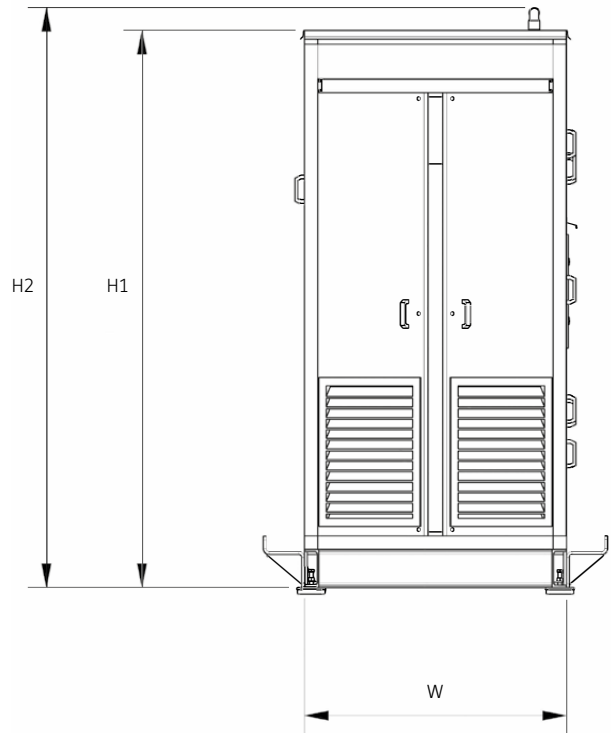
Outdoor installation of a ChillPAC or HeatPAC in the enclosure further provides great flexibility for remote cooling or heating – exactly where you need it.

For easy outdoor installation or as sound enclosure in a machine room.

Sound reduction: 17 dB(A)*

* tolerance of +/-3 dB.

Features	Benefits
Easy to mount, install and connect	Low installation costs and rapid commissioning
Safety control panel included	Compliant electrical control with alarm levels, siren and alarm signals
Insulated wall panels, doors, floor and roof	Optimum indoor environment for the equipment
Heating and ventilation	Controlled temperature both during operation and at standstill
Sealed floor with drain and outside plates of aluzinc	Safe installation where controlled drainage is required, excellent corrosion resistance
Compliance with PED and DS/EN 378	Saves time and project cost



Ambient temperature: -15°C to +40°C.

Model	Dimensions in mm			Weight
	L	W	H1/H2	Kg
Low	4023	1370*	2661/2778*	1210
	5011	1370*	2661/2778*	1360
	6000	1370*	2661/2778*	1510
	6988	1370*	2661/2778*	1760
High	4023	1370*	2916/3033*	1250
	5011	1370*	2916/3033*	1400
	6000	1370*	2916/3033*	1550
	6988	1370*	2916/3033*	1800

* See the drawing above.

Note:
The enclosure is not defined as a machine room, because a person cannot stay inside it with the doors closed. Nevertheless, it fulfills machine room requirements for gas detection, ventilation and ATEX.

All information is subject to change without notice.

Johnson Controls Denmark ApS . Sabroe Factory . Christian X's Vej 201 . 8270 Højbjerg . Denmark . Phone +45 87 36 70 00
www.sabroe.com

PUBL-8913 01.2022

The power behind your mission



© 2022 Johnson Controls. All rights reserved.