



Chillers based on Sabroe core technologies

Chillers meet the demand for indirect cooling

Many industrial and commercial processes and installations require indirect rather than direct cooling. This is normally provided by special chiller units, in which a compressor cools a secondary refrigerant that then provides the desired cooling effect.

The use of secondary refrigerants – water, glycol, brine, etc. – is rapidly increasing because of the demand for safer installations and an intense, continuous focus on energy efficiency.

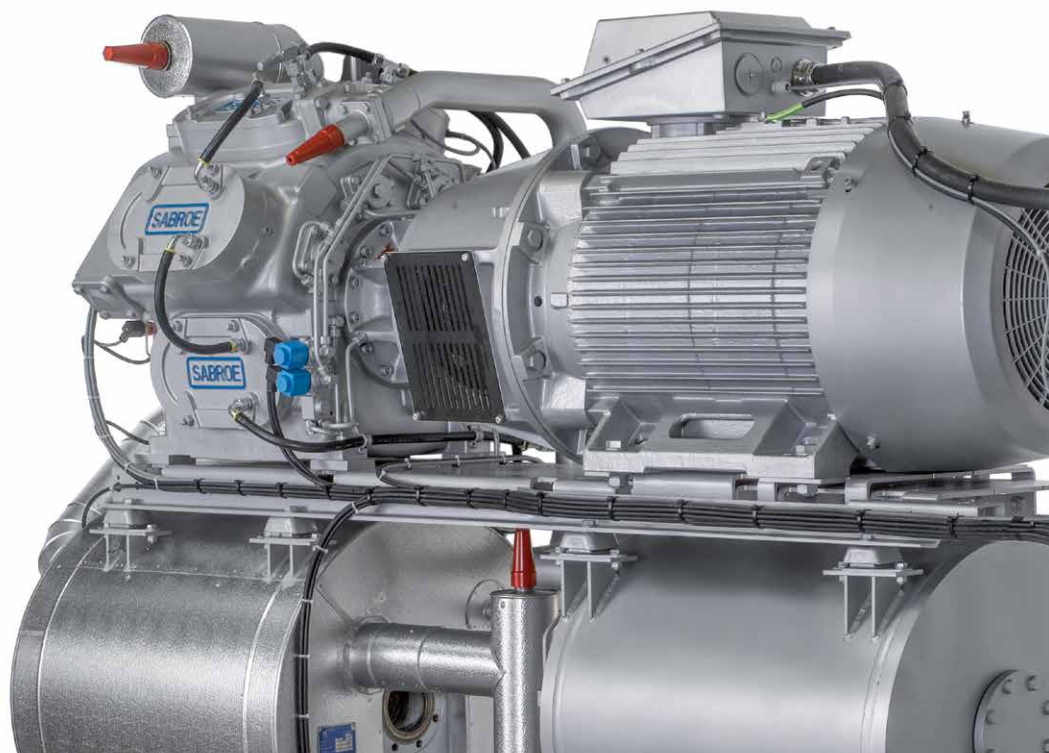
Another driver lies in both national and international legislation that requires the phasing-out of particular refrigerants because of their environmental impacts.

Meeting the demand for chillers

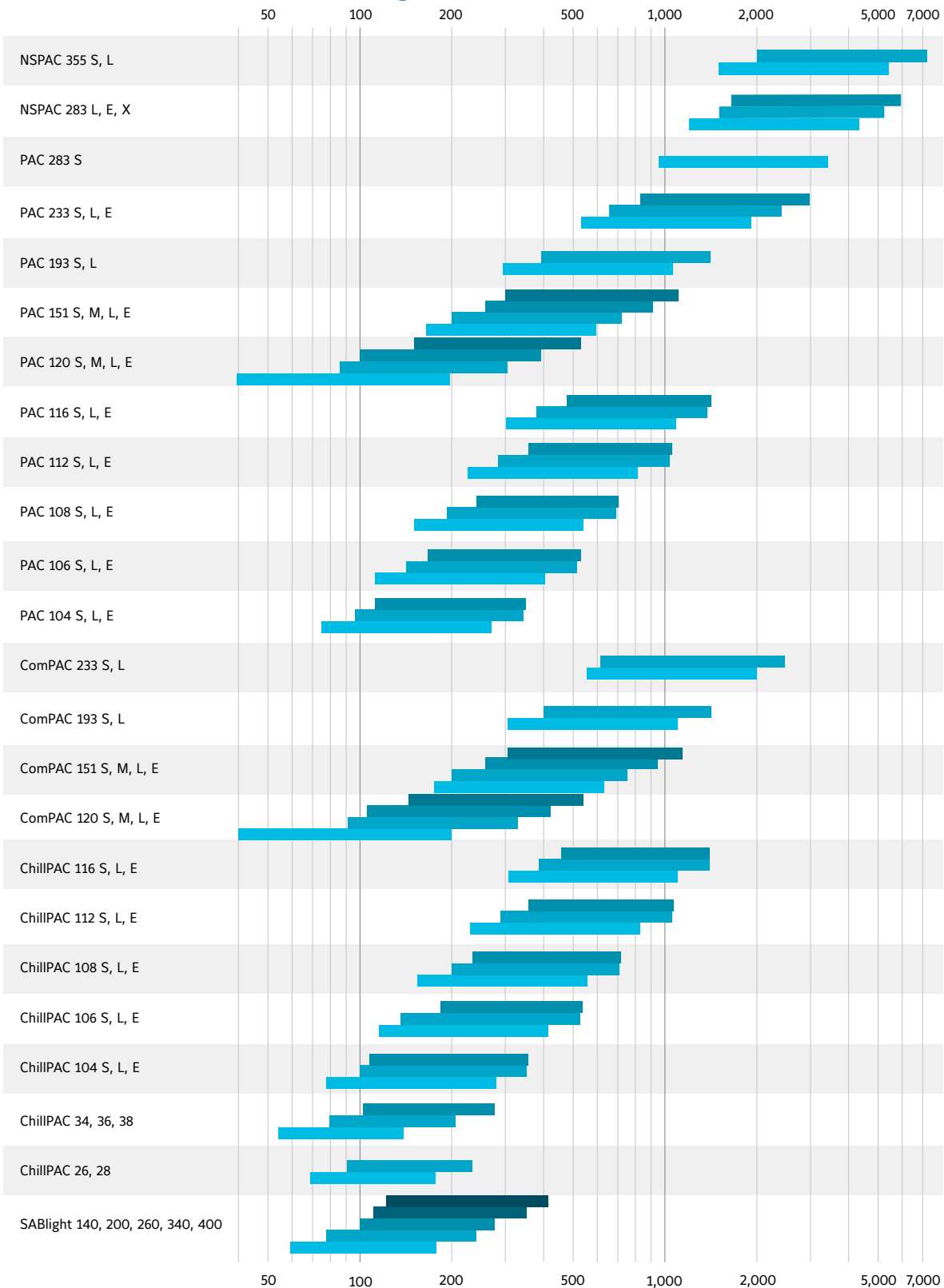
Sabroe therefore provides a range of energy-efficient standardised packaged chiller configurations, all based on high-efficiency Sabroe reciprocating and screw compressors that are world-renowned for their reliability. As a result, Sabroe chillers are at the forefront of this rapidly developing specialist market.

Compliance

All Sabroe chiller units are fully compliant with appropriate major international design codes and the specifications laid down by the most common classification societies. Approval in accordance with other technical requirements, specific national legislation or other classification societies' requirements is available on request.



Sabroe chiller programme



Capacities in kW at 7/12°C (cold side) and 30/35°C (hot side) in maximum speed (Reciprocating compressors at 50/60 Hz. Screw compressors at 50/60/70/100 Hz)

Johnson Controls Denmark ApS · Sabroe Factory · Christian X's Vej 201 · 8270 Høbjerg · Denmark · Phone +45 87 36 70 00 · www.sabroe.com

All information is subject to change without notice.

The power behind your mission

