

# Sabvisual II

## Supervisory Control And Data Acquisition (SCADA)



The Sabroe Sabvisual II is a complete monitoring and data acquisition system that is linked directly to the Unisab II control system and to one or more PLC systems. Together, these provide a unique, highly economical tool for ensuring the easy, energy-conscious running and operation of refrigeration systems.

The Sabvisual II package is designed specifically for refrigeration applications, and provides users with a very effective graphical overview of the refrigeration plant. It includes trend curves to monitor the performance of the plant and the possibility to carry out adjustments to optimise this performance. Additional event and alarm logs are available to make it possible to track any event in the plant.

The efficiency gains and cost savings that result from using Sabvisual software can provide a substantial boost to a company's operational competitiveness.

### Purpose-designed

The system is built around a highly effective software tool specially developed and designed by Sabroe. It is based on a selection of refrigeration control modules that ensure the easy, effective design of a control system for both new and existing installations.

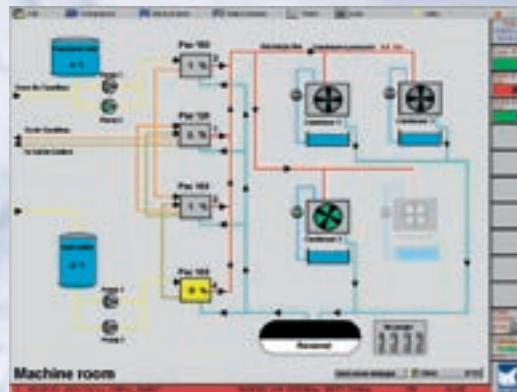
The system is designed to suit each individual plant using a comprehensive selection of standard templates for the compressor, condenser, evaporator, pump package, etc.

This YSAC (YORK Standard Application Concept) tool is based on proven and tested refrigeration control modules that create the graphics screens on the PC and the function blocks in the PLC. The same operation automatically links the PC and PLC modules together and synchronises them to ensure the highest degree of reliability.

### Full plant information

Sabvisual II provides a comprehensive overview of plant operations, supplying the information that makes it possible to monitor and control operation, optimise processes and keep energy consumption to a minimum. It is then possible to use a personal computer to control the plant through adjustment of set points, timers, shut-down limits and other key parameters. Information about the plant is stored on the PC for easy interrogation and diagnostics.

Options for remote connection are also available.



### Available in three versions

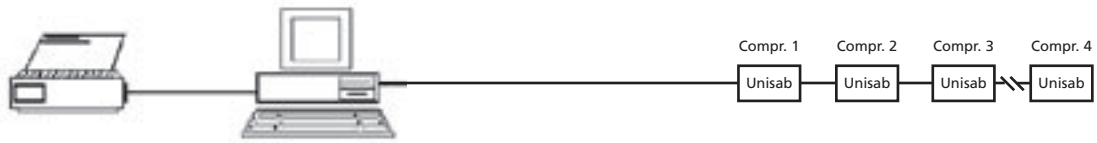
**Sabvisual II Basic** – a ready-to-install package for reciprocating and screw compressors, using the Sabroe Unisab II controller. This provides the immediate advantage of central monitoring and control of the compressors. Can be upgraded to more advanced systems.

**Sabvisual II Light** – prepared for the control and monitoring of refrigeration systems. In addition to compressor control, Sabvisual II Light includes communication with a PLC. No PC or PLC application included.

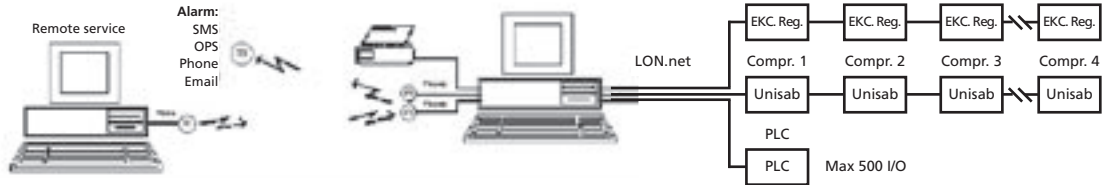
**Sabvisual II Master** – this is the top-end version, including all Sabvisual II Basic features for compressor monitoring but can also be linked to more inputs/ outputs and more PLCs. Network support is also included for plant access via multiple PCs. Sabvisual II Basic and Sabvisual II Light can be upgraded to Master. No PC or PLC application included.



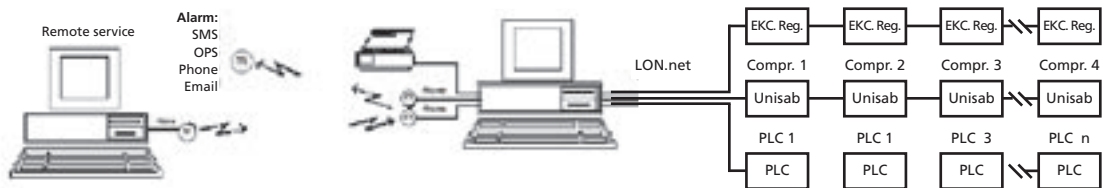
### Sabvisual Basic



### Sabvisual Light



### Sabvisual Master



## Significant advantages

Sabvisual provides highly advanced technology that is easy and straightforward to use. Advantages include

- complete SCADA (Supervisory Control And Data Acquisition) system designed by Sabroe for the control and monitoring of refrigeration equipment
- scalable for low-end, intermediate and high-end refrigeration systems using an upgrade option
- purpose-designed system for use with Unisab II control systems and PLC systems
- suitable for new installations as well as the upgrade of existing refrigeration installations.

## Customer benefits

The Sabvisual II monitoring system provides major operating benefits that include

- trend curves that provide an excellent overview of plant performance as a tool for adjusting performance and maximising energy savings

- immediate, easy-to-understand compressor and plant overview, making centralised operation straightforward and reliable
- full plant information that makes it possible to track irregularities immediately and easily using alarm and event logs
- access to plant information and alarms can be routed to remote locations for maximum staffing flexibility.



*Sabvisual Basic compressor picture*

*All information is subject to change without previous notice.*