

Industrial Refrigeration Courses

Installation, commissioning, operation and maintenance of Compressor units PTK-REF-38

Details

Course Type:	Instructor Led Course
Audience:	New service engineers or new service technicians with little knowledge and experience within industrial refrigeration.
Duration:	3 days
Location:	Holme, Denmark
Language:	EN
Registration:	No later than 4 weeks in advance.
Training dates:	See dates on our web site.
Price:	€ 1200

Objective of the course

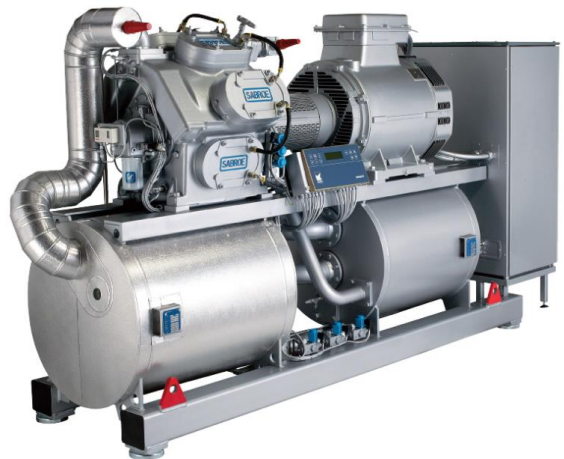
Primarily for NEW technicians or persons with little knowledge of industrial refrigeration.

- How to perform a safe and efficient start-up and commissioning of compressor units.
- Trouble shooting on the specific compressors.
- Provide the participants with relevant background information and the newest knowledge.
- Provide the participants with materials and tools to conduct (local) on-the-job training.

Bring your own safety shoes, as the course is inside the factory area

Program

- Introduction to SAB Chillers
- Review and check of installation and connections
- Review and check of the unit components
- Check and calibration of sensors
- Evacuation and charge
- Documentation and certificates
- Use of manuals and parts lists
- Safety aspects in service – operating manual



Industrial Refrigeration Courses

3 days training plan

TOPICS	TOPICS	TOPICS
Welcome/intro to Johnson Controls	Commissioning	Compressor types and differences
Your expectations to the course		
Basic compressors (screw & reciprocating)	Controls	Controls of compressors
Basic compressors (screw & reciprocating)	Controls	Safety with refrigerants
Valves and controls components	Factory tour	Preventive maintenance
	Reciprocating compressors	Evaluation of the course

Daily training is from 8.30am to 4pm.

Lunch from 11.45am to 12.30pm + coffee/tea and break snacks are included in the price of the course.

Training coordinator

Kenneth Boetius
Senior Lead Training Specialist
Johnson Controls, Holme (Denmark)

Valid from 1 January 2023

All the prices are subject to alteration without further notice.

Industrial Refrigeration Courses

Course registration

Participants subscribe for courses by email to sabrolearning@jci.com

NOTE! Please bring your own safety shoes. Safety glasses and working coats will be available on site.

Payment details

Customer Learning Center entity number (Hyperion Code) is: 213. P/O Address is:
Johnson Controls Scandinavia
PO Box 298
814 99 Bratislava 1
Slovakia

Registration notes

The Customer Learning Center reserves the right to call out the course if there are no sufficient participants backing it up. Before booking any trips or accommodations, please make sure the course is confirmed. To do so, please contact us at sabrolearning@jci.com

Cancellation policy

You are allowed to cancel your registration 4 weeks before the beginning of the training. If you do cancel after this period, your entity will still be charged 50% of the training cost.

No shows (without proper cancellation through the Learning Network) will still be entitled to pay 100% of the training cost; exceptions could apply due to force majeure causes.

Please be also aware that to avoid cancellation penalties, your entity always has the option of placing somebody else in your place. Proper notification to the Customer Learning Center is required for this purpose.

Valid from 1 January 2023

All the prices are subject to alteration without further notice.

Industrial Refrigeration Courses

Travel and stay

Please make sure to book your hotel, travel and transport!

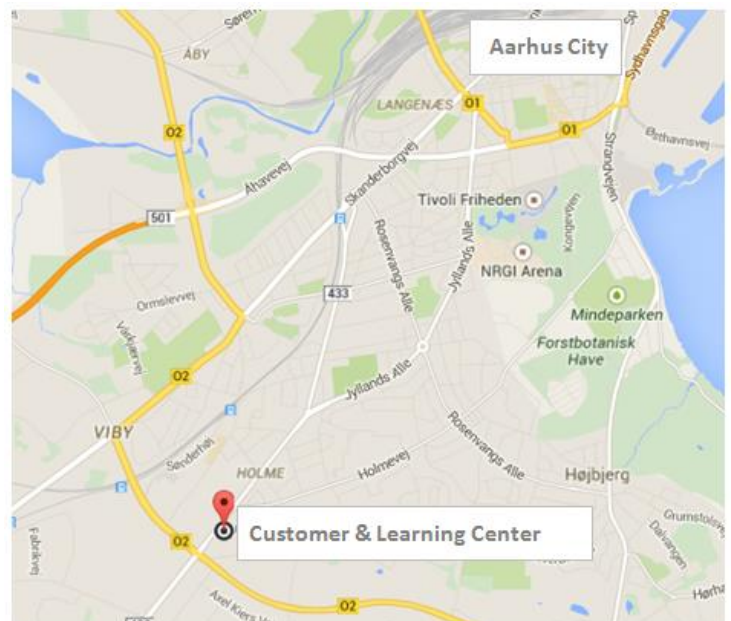
We foresee coffee breaks, lunches, training materials and certificates.

Travel and stay are not included in the course cost.

- Nearest airports are:
 - Billund - www.bll.dk Connection to most European airports
 - Aarhus - www.aar.dk
 - Aalborg - www.aal.dk
 - Transport from the airports to Billund and Aarhus are by bus, taxi or rental car.
- Currency in Denmark is DKK/Danish Crowns.
Please note that Euros are normally not accepted.
- Common credit cards like MasterCards, Visa etc. are accepted in most places, but not in public busses.

Course Location

Customer & Learning
Center
Christian X's Vej 201
8270 Højbjerg, Holme
Denmark



Valid from 1 January 2023

All the prices are subject to alteration without further notice.

Industrial Refrigeration Courses

Summary Logistics for JCI Customer & Learning Center, DK - For your visit

Venue address	Christian X's Vej 201 8270 Højbjerg, Holme Denmark +4587367000
On-site contact person	Kenneth Boetius Kenneth.Romeo.Boetius@jci.com 0045 2550 7360
Distances to venue	From Aarhus airport: 80 km (45 min drive) From Billund airport: 90 km (1hr drive) From Aalborg airport: 130 km (1hr30 min drive) From Aarhus city center: 7 km (15 min drive) From Aarhus station: 7 km (15 min drive)
Hotel	Radisson BLU Scandinavia Hotel www.radissonhotels.com/denmark/aarhus Margrethepladsen 1, 8000 Aarhus C Phone: 0045 86 12 86 65
Hotel	Hotel Scandic Aarhus City www.scandicaarhuscity.questreservations.com Østergade 10, 8000 Aarhus C Phone: 0045 89 31 81 00
Hotel	Comwell Aarhus www.comwell.com/hoteller/comwell-hotel-aarhus Værkmestergade 2, 8000 Aarhus C Phone: 0045 86 72 80 00
Hotel	Helnan Marselis Hotel www.helnan.dk/marselis Strandvejen 25, 8000 Aarhus C Phone: 0045 86 14 44 11
Hotel	Scandic Aarhus Vest www.scandichotels.dk/hoteller/danmark/aarhus/scandic-aarhus-vest Rytoften 3, 8210 Aarhus V
Hotel	Cabinn Hotel www.cabinn.com Kannikegade 14, 8000 Aarhus C Phone: 0045 86 75 70 00
Hotel	Zleep Hotel Aarhus South (nearest hotel) www.zleep.com/da/hotel/aarhus-viby Viby Ringvej 4, 8260 Viby J Phone: 0045 70 23 56 35

Valid from 1 January 2023

All the prices are subject to alteration without further notice.